

7.0 Quick Reference Guide

V6.2 to V7.0 Menu Location Changes

Make sure that “Configure” is toggled on. (see below)

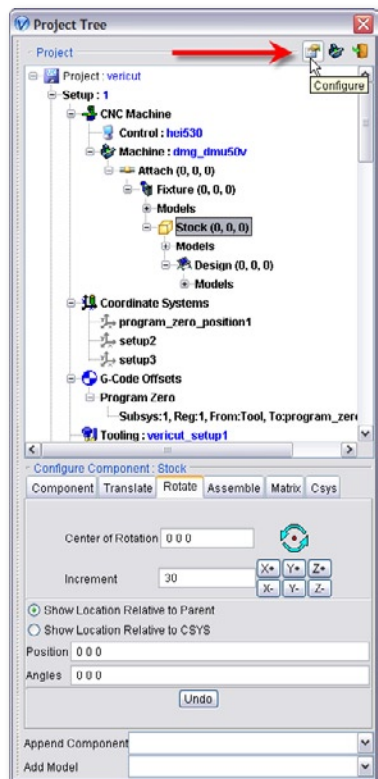
This guide is intended help VERICUT 6.2 users find the menus that they are already familiar with in the V7.0 user interface.

Please Note:

RMB = Right Mouse Button

PT = Project Tree

Config = Configure



V6.2 Location	V7.0 Location	V6.2 Location	V7.0 Location
Project menu:			
CNC Machine	PT > Config CNC Machine menu	Motion (Motion window) Start At/Stop At features	Removed PT > Config Project menu: Start/Stop tab RMB on "Play to End" VCR button in the VERICUT main window
Setup Models > Define (Modeling window)	Removed		PT > Config Setup menu: Motion tab PT > Config Tooling menu
Model tab	PT > Config Model menu: Model tab	Motion features	
Position tab	Removed	Tool features (all except Tool Display and Display Holders in Workpiece View) Tool Display	PT > RMB on Tooling branch: Translucent PT > RMB on Tooling branch > Visibility > Blank PT > RMB on Tooling branch: Blank Holders Project menu > G-Code > Advanced Settings (G-Code Advanced Settings window) Removed
Translate tab	PT > Config Model menu: Translate tab		File menu > Properties > Tolerance tab
Rotate tab	PT > Config Model menu: Rotate tab	Holders in Workpiece View	Configuration menu > Machine Settings PT > Config Setup menu: G-Code tab
Assemble tab	PT > Config Model menu: Assemble tab	G-Code > Settings (G-Code Settings window)	Removed
Matrix tab	PT > Config Model menu: Matrix tab	Settings tab	PT > Config G-Code Offsets menu PT > Config G-Code Offset Table menu PT > Config G-Code Offset Table Record menu Project menu > G-Code > Advanced Settings: Overrides tab Removed
Csys tab	PT > Config Model menu: Csys tab	Rotary Feed Motion Tol Rotary Rapid Motion Tol Floor/Wall Orient Up All other features	PT > Config NC Subroutines menu: Add NC Subroutine Files PT > RMB on NC subroutine file: Delete PT > Config NC Subroutines menu: Add NC Subroutine Files PT > RMB on NC subroutine file: Delete PT > RMB on NC subroutines branch: Delete All Project menu > APT Settings
Mirror tab	PT > Config Model menu: Mirror tab	Tables tab Job Tables	
Component Attributes tab	PT > Config Component menu: Component tab PT > Config Component menu: Accel/Decel tab	Tool Tables Subroutines tab Add Replace	
Import tab IGES File	Removed PT > Config Component menu: Add Model: Model File PT > Config Model branch menu: Add Model: Model File PT > Config Model menu: Add Model: Model File In all cases select IGES Type (Profile or Surface) in file selection box	Delete Delete All APT Settings (APT Settings window)	
Tolerance	File menu > Properties > Tolerance tab: Model Tolerance	Coordinate Systems	Removed
Offset Surface features	Removed	Define New CSYS from File Create CSYS while Simulating Delete	PT > Config Coordinate System menu (Coordinate Systems branch highlighted)
Setup Models > Load Stocks	Project menu > Stock > Load Stocks	All other features	PT > RMB on Coordinate System > Delete PT > RMB on Coordinate System branch > Delete All PT > Config Coordinate System menu (Coordinate System highlighted) Project menu > Active Coordinate System
Setup Models > Delete Detached Stock	Project menu > Stock > Delete Detached Stock	Set Active Coord. Sys.	
Setup Models > Create Model File	PT > Config Model menu: Model tab: Sketcher		
NC Programs (NC Program window)	Removed	Configuration menu:	
NC Program Type	PT > Config NC Programs menu	Machine Settings: Tables tab Component Tree	Configuration menu > Machine Settings: Location tab PT > Show Machine Components toggled "on"
Tool Change By	PT > Config Tooling menu		
Use Selected Files	PT > RMB on NC program file: Active		
Initial Tool	PT > Config Tooling menu		
Tool Override	PT > Config Tooling menu		
NC Program list	PT > NC Programs branch		
List Order Buttons	PT: Drag/Drop NC program file		
Use	PT > RMB on NC program file: Active		
NC Program	PT		
NC Program Origin	PT > RMB on NC program file: Assign CSYS		
Curve Fit	PT: Pick one or more NC program files		
Add	PT > Config NC Programs menu: Add NC Program Files		
Replace	PT > RMB on NC program file: Delete PT > Config NC Programs menu: Add NC Program Files		
Delete	PT > RMB on NC program file: Delete		
Curve Fit	PT > RMB on NC program file: Curve Fit		
Use Tool List	PT > Config Tooling menu: Optional Tool Assignment List		
Processing Options	Removed		
Activate	PT > Config Setup menu > Active PT > RMB on Setup branch: Active		

